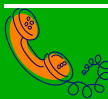


John Purchase Public School

Advance Together: Strive for Excellence



9875 3100



9875 3762



johnpurch-p.school@det.nsw.edu.au
www.johnpurch-p.schools.nsw.gov.au

THE CALENDAR

Events cancelled or postponed at this point.

Dates will be posted here when finalised and when school activities get back to normal!

FROM THE PRINCIPAL

SCHOOL UNIFORM

Now that the weather is getting cooler, students can begin transitioning to winter uniform. The first few weeks of Term 2 are traditionally a transition period from summer to winter uniform. This provides a little flexibility for the students so they are comfortable during a period which is often unpredictable in terms of the temperature.

While the uniform shop has not been available in recent weeks due to COVID-19 restrictions in schools, parents and carers are now able to order uniforms online using *Flexischools*. Uniforms can be picked up from the Uniform Shop (near the school carpark) this Wednesday 13 May or Friday 15 May between 9am and 11am.

The uniform shop is offering a **pick up only** service due to the COVID-19 restrictions. Please adhere to social distancing rules, keeping 1.5 metres away from others waiting at the uniform shop and please do not venture inside the school beyond the uniform shop. Any inquiries to the school or teachers can be made via Seesaw, telephone or email.

If you are not able to collect the purchased uniforms at this time, please consult with Sarah, our friendly uniform shop coordinator, to organise an alternative arrangement. Her email address is: jpps.uniform@gmail.com

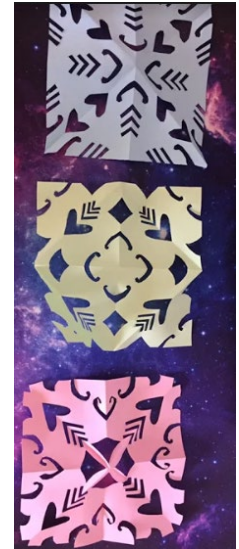
HAPPY MOTHER'S DAY

I do hope all our mums and grandmothers had a wonderful Mother's Day yesterday and were deservedly spoilt. I know it has not been an easy year with all that is being managed at the moment as well as having limitations on who we can see and how we can celebrate.

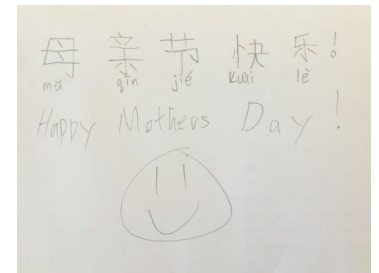
It was sad that we couldn't celebrate with the usual P & C Mother's Day breakfast and shopping stall at John Purchase, but our thoughts were certainly with you.

I do hope you had a lovely day with the children and family.

The illustrations show some of the students' work samples from their Mandarin lessons from last week.



Stage 3 demonstrated appreciation for Chinese culture by enjoying paper cutting and wishing their mums a Happy Mother's Day in Mandarin.



Dear Miss Mu
This was a fun activity 😊.
I think my mum will like it!
From Sam M

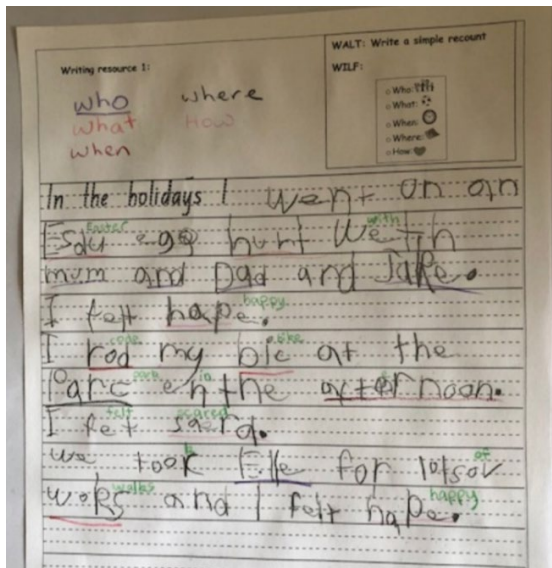
I hope she did too Sam!

Stage 2 students were learning to say *Happy Mother's Day* in Mandarin and were also appreciating paper cutting as a Chinese traditional craft.

Kindies made a book mark for mum by tracing the Chinese characters.



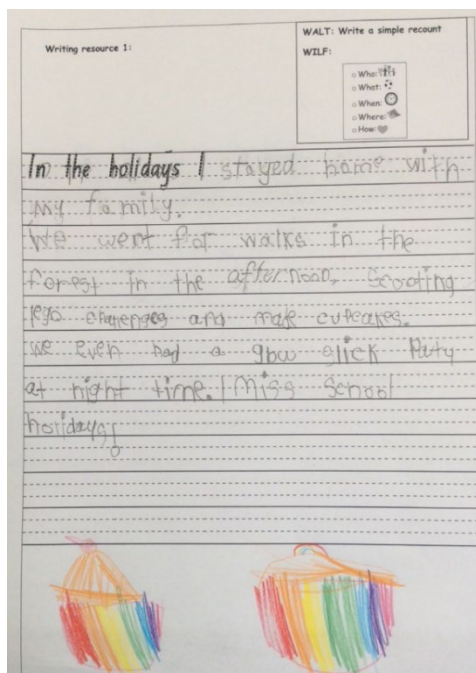
WHAT HAVE THE STUDENTS BEEN LEARNING AT HOME AND AT SCHOOL LAST WEEK?



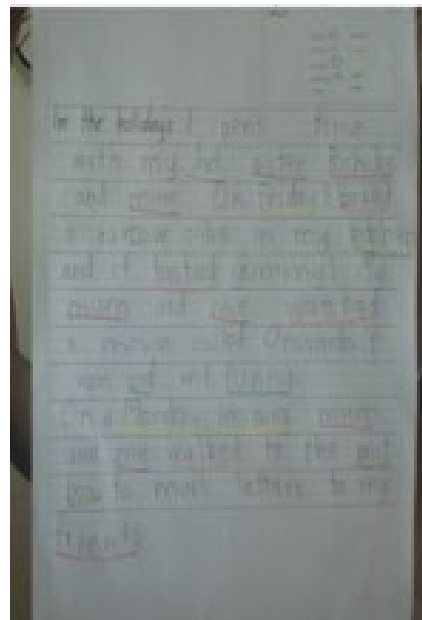
Kindy children have been learning to write recounts. The focus has been on addressing: who, what, when, where and how when recounting an experience.

It is wonderful to see so much improvement from children who have only been at school for such a short period of time.

It's great to see students in Kindy working hard to stretch out words they are using in their writing to represent each sound heard. This is such an important step as children begin learning to write and spell.



This sample is from KE: This student has colour coded their recount in accordance with the Success Criteria and has used Mrs El Bazouni's model to support her learning



Stage 3 students were looking closely at a series of images to identify the key overarching concept or theme being depicted.

Students were asked to write a list of what they initially saw in the images and then were asked to reflect on the list created to think about how the images connect and what underlying theme may be represented.

The pretest shows teachers what students have achieved from prior learning and enables them to ensure the following lessons continue to move the students' learning forward.

English PRETEST

1. Both ^{people} have blue eyes, Both ^{people} have black stud earrings, Both pictures have the same setting, Both people have the same shirt or jacket, One Old one is young, Both have similar hairstyles, The boy is not smiling but the old man is, Both of their eye brows are in the same position, Both have big foreheads and the people in the photos are actually the same.

2. Both of the trees are completely different, One place seemed to have been hit by drought while the other picture has plenty of greenery, One tree has many leaves as the other has none, One picture has brown clouds and the other has white clouds, One place seems to have brittle ground as the other has a green healthy and strong ground, One tree has sun rays on its leaves while the other has the clouds shadows falling on its bare branches, One side of the picture has a blue sky when the other has brown clouds covering the sky, Both pictures have a vast landscape, One picture has cracks in the ground while the other is one piece and one place looks like a desert while the other looks like a park.

• This picture looks like the evolution of the light bulb, the light bulb has changed shape and efficiency, the light bulbs have come a long way, the first two inventions are see through the other two are not, the candle has a handle, light bulbs now are able to be screwed in, the design has changed, the size has changed, the quality ^{of the glass} has also changed, The making was from simple to complex and evolved from fire to electricity.

ORGANISATION FOR PHASE 1 OF THE MANAGED RETURN TO SCHOOL

There has been a lot of information sent home in recent times about how we will operate during this COVID-19 period. I have therefore created an Infographic which provides a quick reference outlining key details. This has been emailed to you over the weekend but is also included below.

Leonie Black
Principal

STUDENTS RETURN ONE DAY PER WEEK

Looking after one another at JPPS!



1

ANY SYMPTOMS - DO NOT COME!

No one is to come on site if they have any symptoms, regardless of how minor these are. Students with symptoms such as a runny nose or scratchy throat, will be isolated and sent home. Advised to go to the doctor. Return once cleared.



2

ON SITE CLASSES

Teachers are teaching the children in their own classes from Monday through to Thursday, unless on leave or in a 'high risk' category. Please inform the teacher if your child is not coming on the allocated day/s.



3

WHAT TO BRING

Children bring their fruit break, morning tea, lunch and drink bottle. The canteen is NOT open until week 4 (Mon 18 May). From 18 May, order on Flexischools. Children can order before school, but parents will not be able to come in to the school. Bubblers are not to be used.



4

MORNING DROP OFF

No parents are to come on site (apart from OOSH drop offs or uniform pickups). Please phone or email the school for inquiries. Children should be dropped off at the front of the school between 8.30 am and 8.50 am. Staff members will be at the front gate on Purchase Rd to welcome and usher students straight to their classrooms. Students will not be sent to the COLA between Mon & Thurs.

AFTERNOON PICK UP

No parents on site.

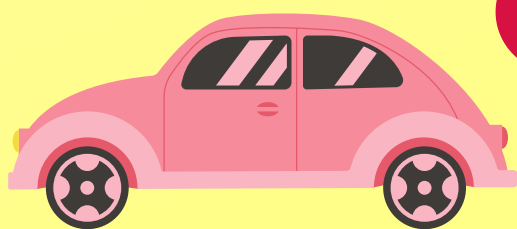
Move away from the front of the school as soon as children have been collected. No congregating. Please ensure your children know the arrangements. 2.40pm - K & Yr 1 & their siblings collected by parents/carers at Purchase Rd side gate near the bus stop & in line with kindy rooms.

2.45pm K - 6 Kiss and drop students dismissed.

2.50pm K - 6 - bus and those walking home dismissed.

2.50pm K - 6 students waiting for high school siblings to wait in the COLA. A kindy teacher will escort kindy.

5



6

TEACHER FEEDBACK

Students will follow the same learning plan whether at home or at school. Teachers cannot be as responsive to online learning and cannot provide nearly as much feedback, as they are at school teaching and supervising the students.



Thank you for helping us all keep safe

FROM THE DEPUTY PRINCIPAL**SCHOOL PHOTOGRAPHS**

Individual and sibling photographs that were taken in February, have now arrived. This week, class teachers will begin to distribute them to students, when they return to school.

GAMES ON THE PLAYGROUND

Some parents may remember these playground games: 'elastics', hopscotch, or jump rope. Students at school have been trying them out! All of these games are good examples of things we can play, while maintaining some social distancing.



“Thank you, teachers!”



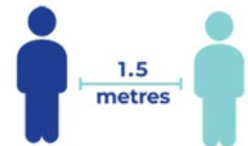
If you are missing your teacher while learning from home, you're not alone. The ABC is asking students from across Australia to send in a short video saying hello and thanks to your teacher. The ABC will put your videos together in to a big message of thanks to play on ABC ME and on the ABC social media pages. Follow the guidelines provided, on how you can film on a smartphone, and enter below – **but make sure you get your parent or guardian's permission first!**

<https://www.abc.net.au/education/learning/ugc-form/>

The following safety and technical guidelines have been provided:

1. Good lighting! Make sure you're in a place where we can see your face and some of your surroundings. Try not to stand too close to walls.
2. Minimal background noise. We want to hear you loud and clear, so make sure we can't hear the TV or washing machine in the background!
3. **Don't wear your school uniform, or film anything that identifies where you live.**
4. Shoot in landscape. That means turning your phone on its side, like how you would view a TV screen.
5. Be happy and make your sentence snappy! Thank one teacher, or your teachers for things they've done for you or activities you like. Here are two examples, "Thank you teachers for all your hard work!" or "Thank you Mrs Smith for our online dancing lessons."
6. **Please don't mention your own name or what school you're from.**

Our School Expectations



This week's expectation is:
**Responsibility during Covid-19: Keep your distance
(1.5metres)**

RETURN TO SCHOOL PHASE 1

Parents are reminded that the canteen is closed this week. We are also suggesting that students bring their own water bottles to school, which can be re-filled from taps. Bubblers are currently not being used.

SPECIAL RELIGIOUS EDUCATION AND ETHICS

Face-to-face Special Religious Education (SRE) and Special Education in Ethics (SEE) will not be available until schools resume normal operations (Phase 4). This includes the use of interactive online media such as Google Classrooms, Seesaw or Zoom.

Following discussions with the Special Religious Education (SRE) and Special Education in Ethics (SEE) approved providers on the Consultative Committee for SRE and SEE, approved providers will deliver their authorised curriculum with modifications to enable students to learn from home from the commencement of second term 2020.

The approved providers acknowledge the necessity to review lesson content of the authorised curriculum and the mode of delivery to enable ease of access by students. The approved providers recognise that learning at home will not replicate face-to-face learning at school.

From the commencement of second term, there will be five live portal entry points to lesson content:

- [Approved providers for All Faiths SRE](#) (Islamic, Jewish, Buddhist, Bahai, Hindu)
- [Anglican SRE](#)
- [Catholic SRE](#)
- [Approved providers for Christian based faith SRE](#)
- [Primary Ethics for SEE](#)

Additionally, the coordinator of Catholic scripture has provided the following learning from home link for our Catholic students at:

<https://www.bbcatholic.org.au/parish-community/ministries/ccd/curriculum/learning-from-home-sre-lessons>

The Ethics (SEE) coordinator has also provided this additional link and information regarding the available online program:

<https://mailchi.mp/primaryethics/schools-bites>

Primary Ethics 'Bites' will be available for every child and their family. Each 'Bite' provides an ethical dilemma presented in audio or audio visual format, along with a written version. Students are encouraged to read, watch or listen to the stories which provide a context for the dilemma, and ponder the questions provided. Siblings and other members in the household, are encouraged to participate, too. These 'Bites' use stories to encourage the use of questions and consider alternative views to help build skills in critical thinking and ethical reasoning.

Happy Mother's Day to all JPPS Mums!



Mrs Adela King
Deputy Principal

NSW Department of Education

PHASE 0

Schools are open for families who need it.

- Families are encouraged to keep their children at home wherever possible, with no student to be turned away.
- Students who attend school are supervised only, not in their regular classes.
- No excursions or inter-school activities.
- Continued enhanced cleaning and hygiene supply arrangements.

PHASE 1

Students at school at least one day per week.

- Schools have discretion for establishing which group attends on which day, with a preference to group siblings/families together.
- Families who need to send their child to school every day may continue to do so and no child will be turned away.
- Classes are split across different spaces and break times can be staggered.
- No excursions or inter-school activities.
- Continued enhanced cleaning and hygiene supply arrangements.

PHASE 2

Students at school at least two days per week.

- Schools have discretion for establishing which group attends on which days, with a preference to group siblings/families together.
- Families who need to send their child to school every day may continue to do so and no child will be turned away.
- Classes are split across different spaces and break times can be staggered.
- No excursions or inter-school activities.
- Continued enhanced cleaning and hygiene supply arrangements.

PHASE 3

Students at school five days per week, with social distancing measures.

- Students with increased health risks may continue to learn at home to suit their individual needs.
- Students remain in the same classroom for the day, break times can be staggered to reduce mixing between class groups.
- No excursions or inter-school activities.
- Continued enhanced cleaning and hygiene supply arrangements.

PHASE 4

Students at school five days per week, with full school activities.

- Normal school breaks and entry/exit processes will resume.
- Infection control procedures will continue on a school by school basis.
- Communication to staff, students and families regarding NSW Health advice will continue.
- Continued communication to the Early Childhood Education sector regarding NSW Health Advice.

At all times

- Schools are safe places for students, teachers and staff.
- All students engage with a single unit of work.
- Keep up-to-date with your school's communications to make sure you receive important messages about timetable changes.
- Any identified cases of COVID-19 will continue to be managed in line with health advice, including temporary school closures where necessary.

Learning from home

Practical resources and guides to support students are available at the department's [Learning from home hub](#).

You can now

- Send your child/children to school one day a week.
- You are encouraged to keep your child at home for the rest of the week wherever possible.
- Check with your school to see which day of the week your child/children should attend.
- Use the school canteen and uniform shop where appropriate hygiene measures are in place.

You can now

- Send your child/children to school two days a week.
- You are encouraged to keep your child at home for the rest of the week wherever possible.
- Check with your school to see which two days of the week your child/children should attend.
- Use the school canteen and uniform shop where appropriate hygiene measures are in place.

You can now

- Send your child/children to school every day.
- Access community services run on school sites, where they are not restricted by Public Health Orders.
- Use the school canteen and uniform shop where appropriate hygiene measures are in place.
- Walk your child/children into and out of school while maintaining social distancing.

You can now

- Send your child/children to school every day.
- Participate in school excursions and inter-school activities.
- Use playground equipment at schools.
- Drop your child/children off at school as you would normally do.
- Participate in school based activities such as volunteering in classes and assemblies.
- Use services that usually operate at your school like canteens and other community run activities.

You must continue to

- Keep your child/children at home if possible.
- Support your child/children to continue learning at home.
- Communicate with your school via email and phone wherever possible.
- Follow the health advice and keep your child/children at home if they are unwell.

You must continue to

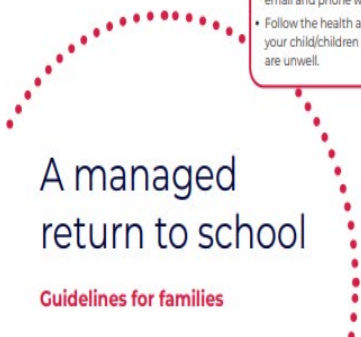
- Follow your school's advice regarding changes to drop off and pick up, including staying in your car when dropping off and picking up your child/children if safe to do so.
- Maintain social distancing by avoiding gathering outside of school gates.
- Make sure your child/children have access to lunch and snacks, noting some canteens may not be operating at this stage.
- Support your child/children to continue learning at home on remote learning days.
- Communicate with your school via email and phone wherever possible.
- Follow the health advice and keep your child/children at home if they are unwell.

You must continue to

- Follow your school's advice regarding changes to drop off and pick up, including staying in your car when dropping off and picking up your child/children if safe to do so.
- Maintain social distancing by avoiding gathering outside of school gates.
- Make sure your child/children have access to lunch and snacks, noting some canteens may not be operating at this stage.
- Support your child/children to continue learning at home on remote learning days.
- Communicate with your school via email and phone wherever possible.
- Follow the health advice and keep your child/children at home if they are unwell.

You must continue to

- Follow your school's advice regarding changes to drop off and pick up, including staying in your car when dropping off and picking up your child/children if safe to do so.
- Maintain social distancing by avoiding gathering outside of school gates.
- Make sure your child/children have access to lunch and snacks, noting some canteens may not be operating at this stage.
- Support your child/children to continue to learn at home if they are required to learn remotely.
- Communicate with your school via email and phone wherever possible.
- Follow the health advice and keep your child/children at home if they are unwell.



A managed return to school

Guidelines for families



FROM THE TEACHERS

PSC 10 WEEK CHALLENGE is still on

The Premier's 10 week Challenge is still going ahead as normal. It is encouraging to see that PSC registration numbers are still soaring! So far, **over 200,000** primary and secondary students and **6,945 staff have fully registered for the 2020** 10 week Challenge.

Whilst social distancing measures are a priority, finding ways to keep physically active is important to overall health and wellbeing, and physical activity might act as a protective measure against all types of illness. As all sporting competitions have been temporarily ceased, it is more critical than ever to find new or other ways to promote the importance of and remain involved in physical activity.

We are currently putting together a range of suitable strategies that teachers can utilise to achieve this effectively and will publish these as soon as possible. In the meantime, some suggested strategies for your classes are listed below, we encourage facilitators to share these widely with their colleagues.

Resources to keep kids active during class

The Play for life resource has a wide variety of activities, many will be suitable in this situation <https://www.sportaus.gov.au/p4>

GoNoodle is widely used in primary schools, but can be great for secondary too <https://www.gonoodle.com/>

Thinking while Moving – the PSC website has a whole host of lesson plans for including physical activity into English and Maths lessons <https://app.education.nsw.gov.au/sport/psc/Resources>

Just Dance – there are hundreds of videos on YouTube https://www.youtube.com/channel/UChIjW4BWKLqpojTrS_tX0mg

Jessica Mu

FROM THE P&C**NOTICE OF SPECIAL GENERAL MEETING**

When : Monday 11th May 7pm

Where : Zoom

<<https://us02web.zoom.us/j/92493930371?pwd=bUpDZ0czTWpOK0xRMFZ1OFZiRURUUT09>>
(Meeting ID: 924 9393 0371, Password: 174772)

Please make sure your name is set correctly so that we can record attendance properly.

Purpose : Elections of Vacant P&C positions

Dear JPPS Parents and Carers,

At the P&C Annual General Meeting in March, a number of roles on the P&C did not get filled. These roles are still open for nominations and to be filled. If you are interested in taking up one of these positions please see the attached link on the school website to find out more about some of the roles. (<https://johnpurch-p.schools.nsw.gov.au/p-c/p-c-rules-and-guides.html>)

If you have any questions, contact Anh Holland, one of our current Vice Presidents at johnpurchasepublicschool-vp1@pandcaffiliate.org.au or call her on 0404082240.

Voting will take place straight after the General Meeting at 7pm 11th May.
If you are not currently a member of the P&C, you must attend the General Meeting first.

If two or more candidates are standing for the same role, we will defer any votes for election until such time as we are able to meet face to face and conduct a traditional ballot.

Roles available for nominations

- President
- Secretary
- Executive members x2
- Child Protection Officers: Female Officer
- Canteen/Uniform Subcommittee Convenor
- Canteen/Uniform Subcommittee Minute taker
- Canteen/Uniform Subcommittee Members x 2

From the P&C

CANTEEN RE-OPENING – Monday 18 May

The Canteen will be re-opening in week 4 on Monday 18th May from 8.30am to 1.30 pm Monday to Friday. As the Department and the school are discouraging non essential adults in the school and have advised us not to have volunteers, we are not having any volunteers in the canteen. Therefore the canteen will be staffed by either Donna or Anna, or sometimes both when it gets busier. To all our volunteers who are keen to get back and help in the canteen, we will let you know when you can come back to help us – we will miss your friendly smiley faces.

To reduce cash handling, we would ask parents to order the lunches on www.flexischools.com.au however we will still accept lunches over the counter before school. Please ensure the bags are written on to save time and avoid queuing in the morning.

There will be lines on the ground for students to line up and keep social distance from each other as well as a teacher on duty to ensure the 1.5m distance is adhered to.

Only students with lunch orders will be allowed to pick their lunches up so please ensure your child knows they have a lunch order.

Anna and Donna

UNIFORM SHOP OPEN ON WED 11th MAY & FRI 13th MAY FOR A PICK UP ONLY SERVICE

The uniform shop will be open from 9am to 11am on Wednesday 13 May and Friday 15 May for the collection of new uniforms. Please purchase new uniforms via Flexischools at least 24 hours prior to picking up the uniforms as it can take 24 hours for Flexischool orders to be received and processed. There will be no cash or EFTPOS sales available on those days, only Flexi collection.

The orders will be packaged and ready to collect. This will enable uniforms to be given out quickly whilst fostering social distancing. The school asks that you do not venture beyond the uniform shop, that you do not arrive prior to 9am and that you leave the school immediately after picking up your order. JPPS requires all students to be in class before any parents arrive for uniform pick-ups. Please also respect the 1.5 metre distancing rule if there are any other parents waiting to pick up parcel.

At this stage, we cannot have our wonderful volunteers on the premises to help as we are still working under Covid restrictions, so your patience is appreciated. Please email if you cannot collect purchases at the nominated time, or if you order the wrong size. Goods may be returned or swapped but only unworn, in original packaging.

Thank you! Stay healthy and safe.

SARAH NICHOLS

Uniform Shop Manager | John Purchase Public School
jpps.uniform@gmail.com.au | 0412 987 027

BOOK CLUB IS COMING!

We're really excited to have **BOOK CLUB** running this Term, but it will look a little different! It will be a **virtual catalogue** rather than the printed catalogues you're used to receiving.

To order from this issue go to:

Virtual Catalogue: <https://scholastic.com.au/book-club/virtual-catalogue-1/>



Place your order on LOOP as normal and orders need to be in by:

18th MAY 2020

We will receive your order here to our school like normal.

It is anticipated that orders will be arriving during the student transition back into the classroom, so it is likely that orders will be distributed in class as 'normal'. However, if circumstances do not permit this, other arrangements will be made to get orders to students speedily so they can enjoy their books asap!

If you have any questions or queries, please email Book Club Parent Volunteer:

Ruth.dsilva@bigpond.com



Even though this is a virtual catalogue, we will still receive 20% of your order value back in Scholastic Rewards to use to purchase additional books and resources for our school!